

11.3.3 Setting Up JSpell Evolution Spell Checker Dictionary

If an offline spell checker functionality is needed, you can download **JSpell Evolution AJAX Spell Checker** from <http://www.jspell.com/ajax-spell-checker.html>.

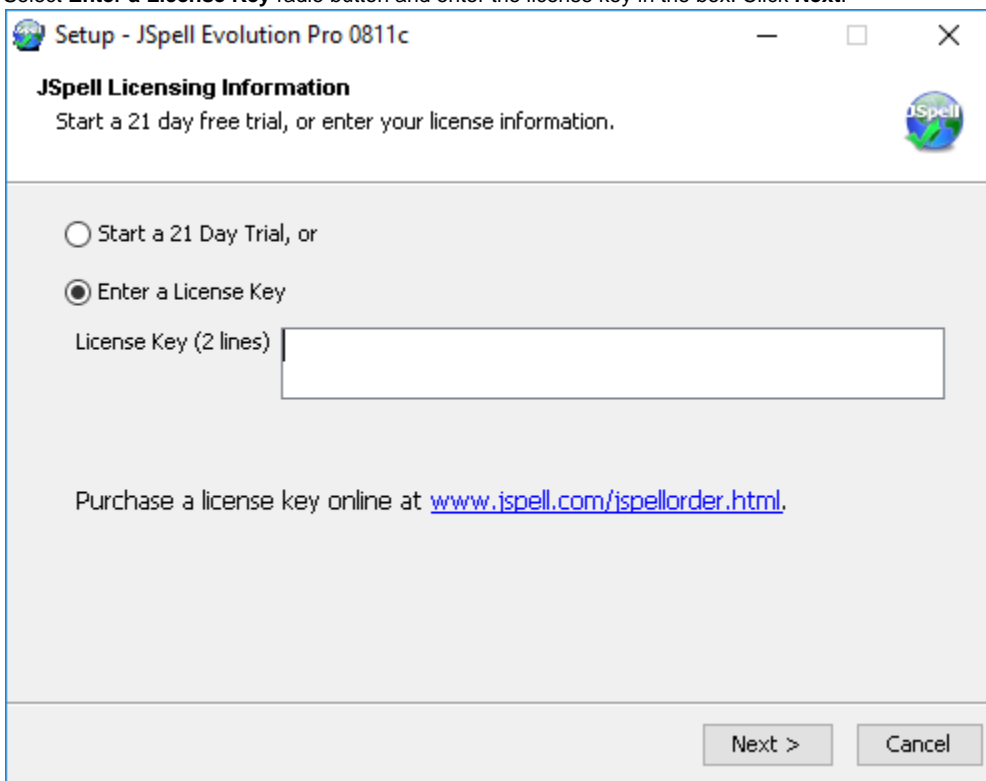
It may be desirable to install an offline spell checker for one of the two reasons:

- If you need to install custom dictionaries/thesaurus
- You are behind a firewall that prevents the application from accessing URLs outside the application's domain

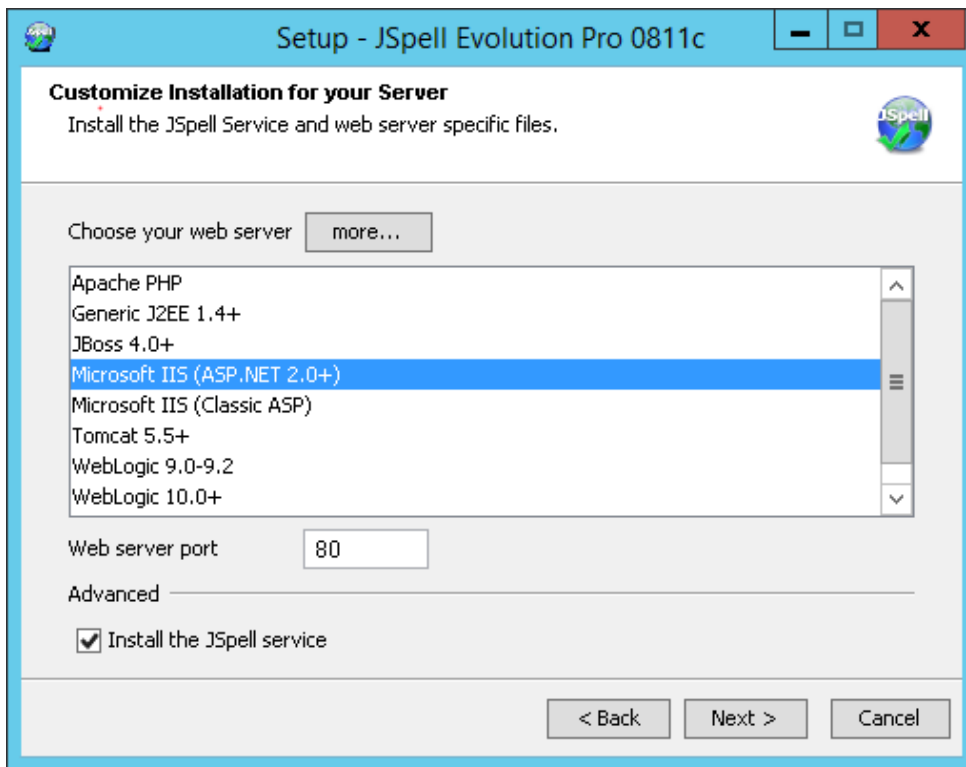
Install JSpell Evolution AJAX spell checker

Here are the steps to install JSpell Evolution AJAX spell checker:

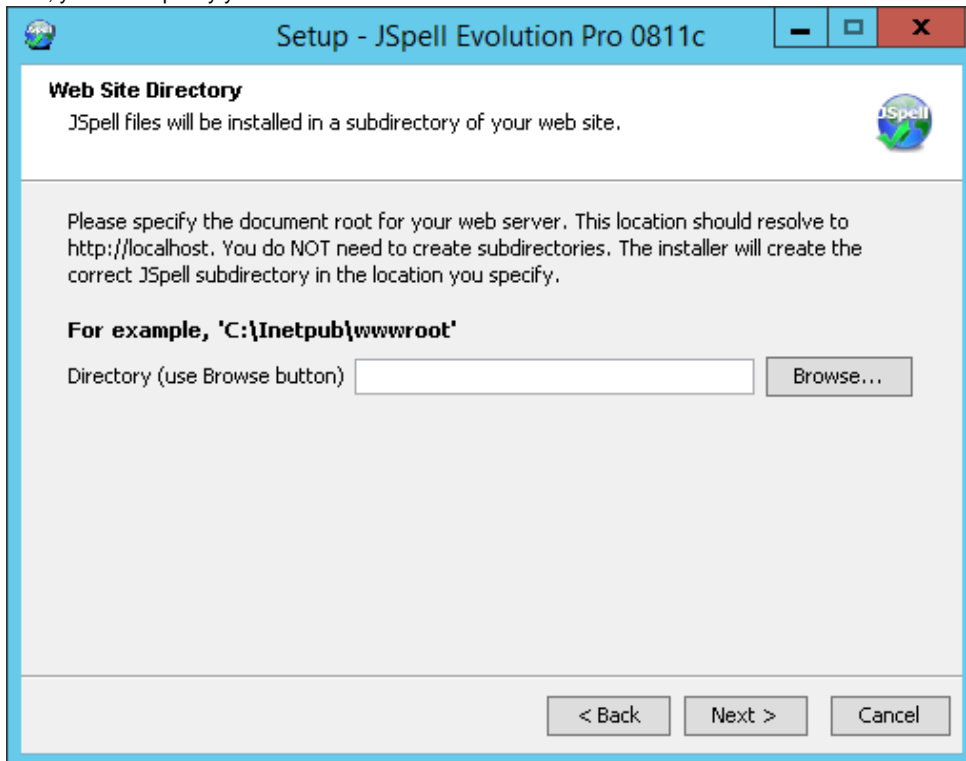
1. Extract the downloaded file *jspellevolutionw.zip* and execute *jspellevolution_0811c.exe*. The number in the file name of the executable file will differ as per its current version.
2. Click **Next** on the welcome screen of the installation wizard.
3. Select **Enter a License Key** radio button and enter the license key in the box. Click **Next**.



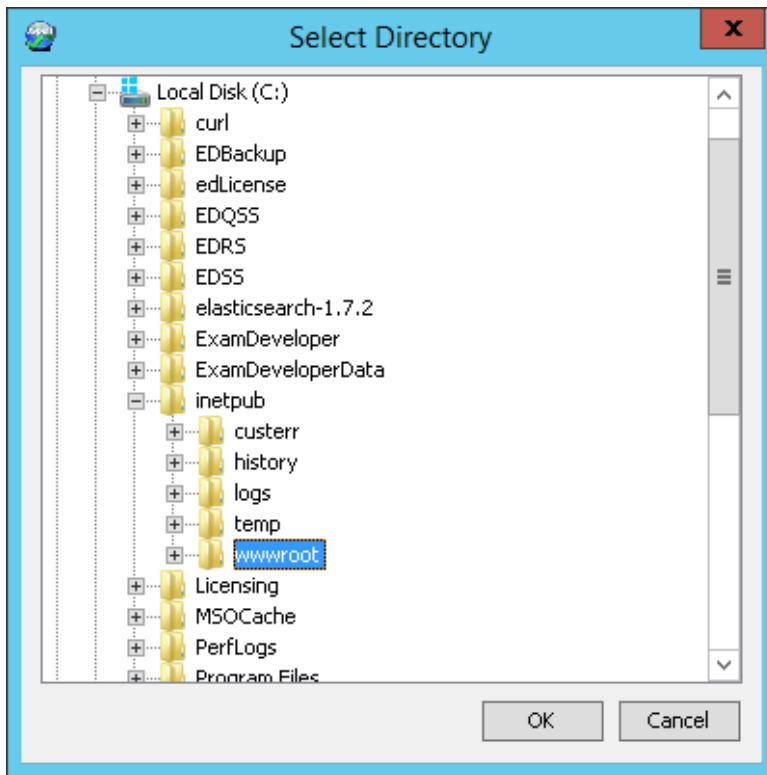
4. In the next screen, choose your web server from the list. In our case, choose **Microsoft IIS (ASP.NET 2.0+)**. Set the **Web server port** to **80** and make sure that the check box is enabled for **Install the JSpell service**. Click **Next**.



5. Specify the path to install JSpell Evolution and click **Next**. You can leave this at default.
6. Next, you must specify your website document root. Click **Browse**.



7. Browse and select **C:\inetpub\wwwroot** since we are using Microsoft Windows IIS. Click **OK** and then **Next**. Click **Next** again.



8. Click **Finish** to complete the JSpell Evolution setup.
9. Open the ExamDeveloper **appSettings.config** using Notepad or a suitable text editor, add the below line, and save it.

```
<add key = "JSpellFolder" value="C:\Program Files (x86)\JSpell Spell Checker"/>
```

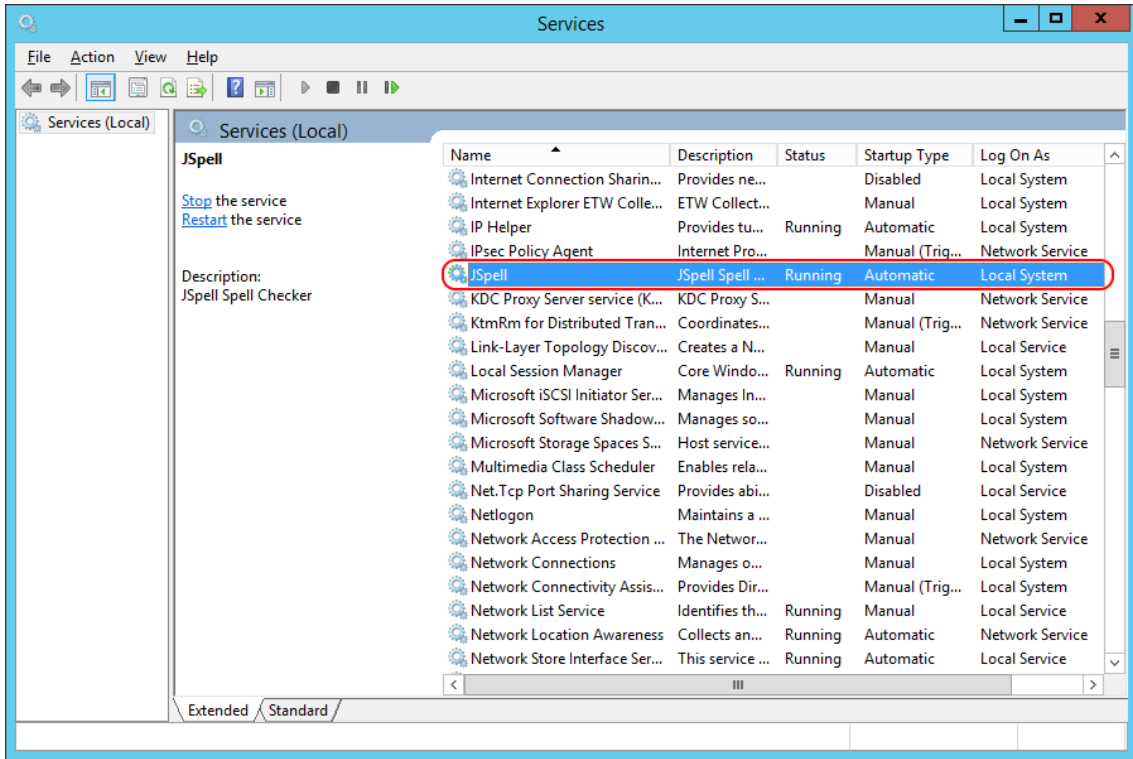
Ensure the value of the above key is the path where the JSpell Evolution AJAX Spell Checker has been installed. Thus, if it is installed in a non-default location such as *D:\JSpell Spell Checker*, then the line should appear as below:

```
<add key="JSpellFolder" value="D:\JSpell Spell Checker"/>
```

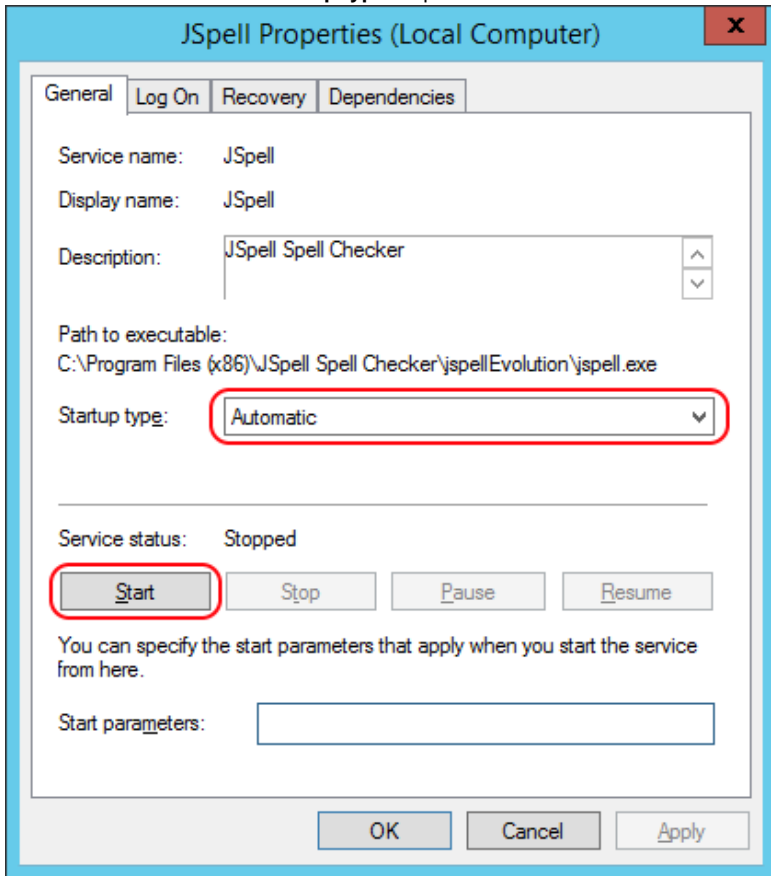
Ensure the JSpell service is running

Ensure that the JSpell service is running in the following way:

1. Run "**services.msc**" (click **Start Run** or **Windows + R** keys together, type "**services.msc**" in the Run dialog box, and click **OK**). Ensure that the **Status** shows as **Started** and the **Startup Type** is **Automatic**.




2. If you don't see as above, then right-click **JSspell** in the list and click **Properties** to open the **JSspell Properties** window.
3. Select **Automatic** from the **Startup type** drop-down and click the **Start** button under **Service status**.



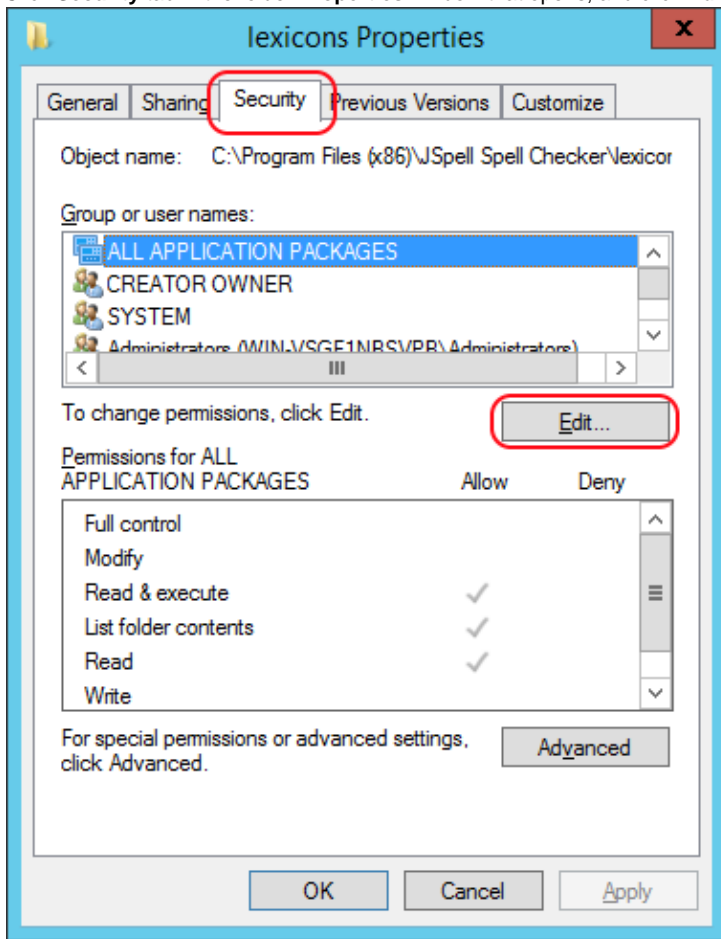
4. This starts the JSspell service and sets it to start automatically at Windows startup.

Grant Write access for the JSpell custom dictionary folder to "NETWORK SERVICE"

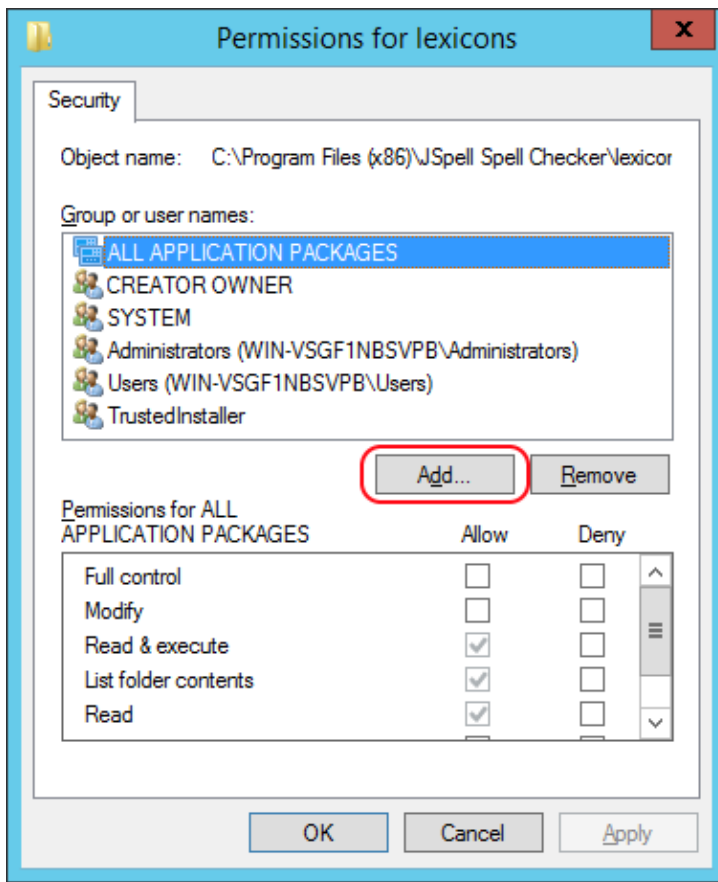
 The user who is going to be given Write access to the JSpell custom dictionary "*lexicons*" folder has to be the same user who is also the IIS user for this instance of ExamDeveloper. In our example, this is the user "NETWORK SERVICE".

Granting the user "**NETWORK SERVICE**" read/write access to the "*lexicons*" folder in the "*JSpell Spell Checker*" directory (in our example, *C:\Program Files (x86)\JSpell Spell Checker\lexicons*) is necessary to save custom dictionaries (exclusions) to be used with JSpell. This can be done as below:

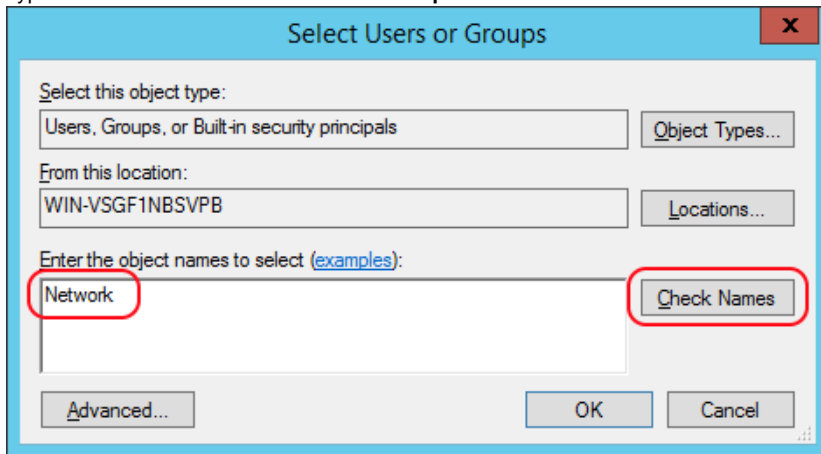
1. Navigate using Windows **File Explorer** to the "**JSpell Spell Checker**" folder (in our example *C:\Program Files (x86)\JSpell Spell Checker*), right-click the "**lexicons**" folder inside it, and click **Properties**.
2. Click **Security** tab in the folder **Properties** window that opens, and click **Edit** button.



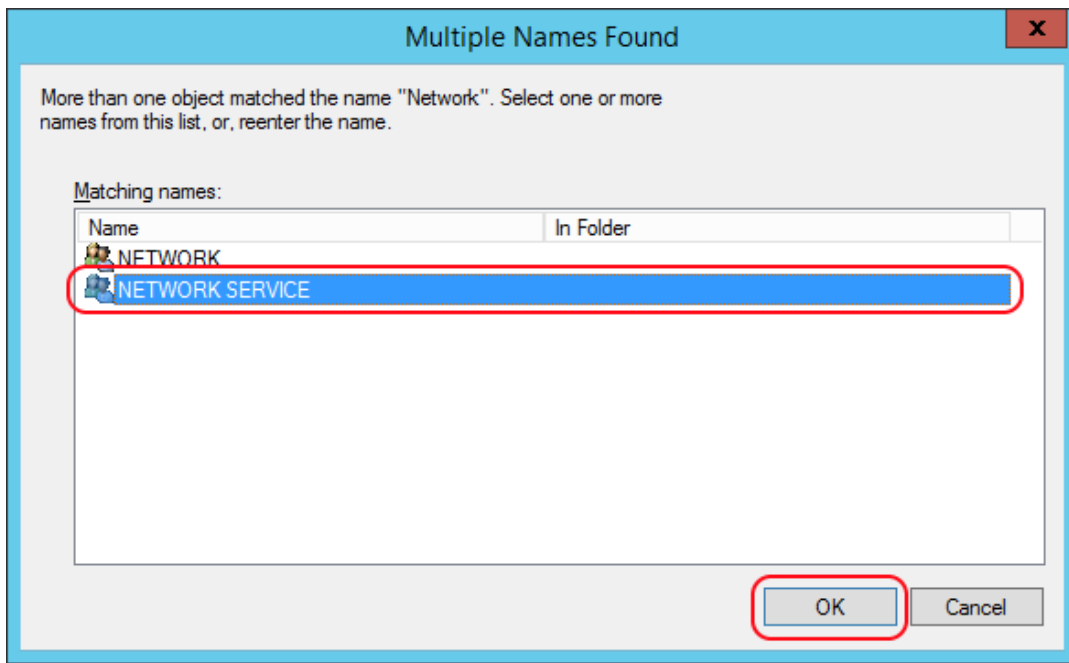
3. Click **Add** in the **Permissions** window that opens next.



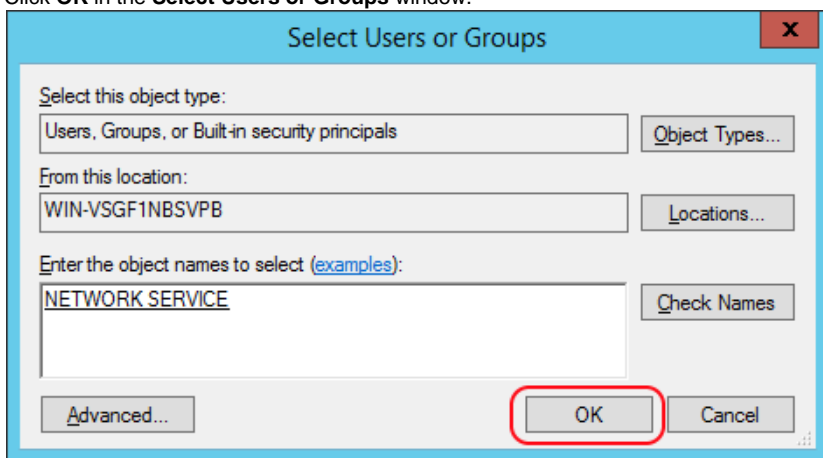
4. Type "Network" in the **Select Users or Groups** window and click **Check Names**.



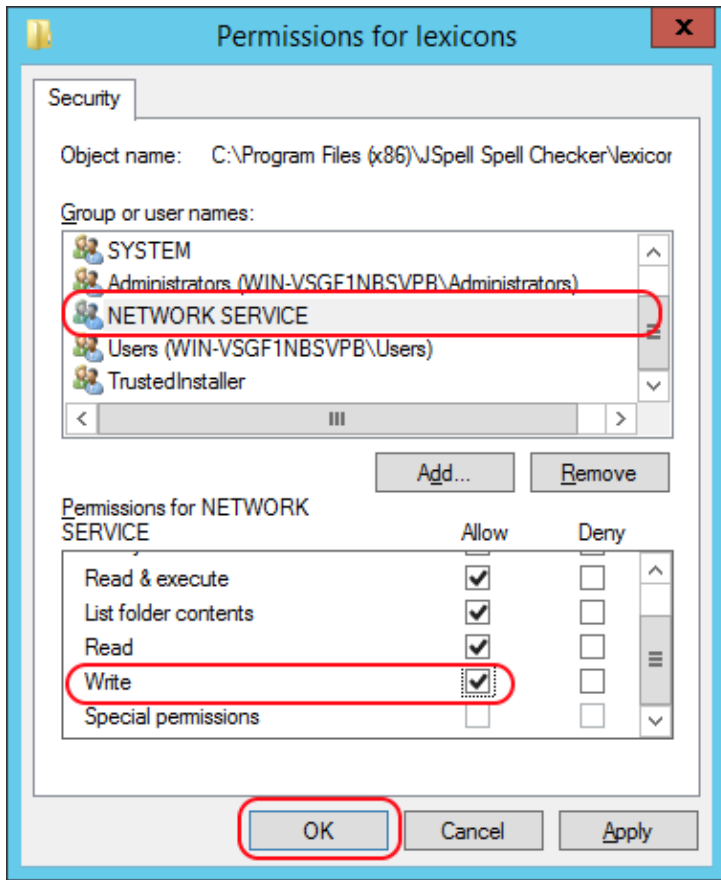
5. Select **NETWORK SERVICE** in the **Name (RDN)** list and click **OK**.



6. Click **OK** in the **Select Users or Groups** window.



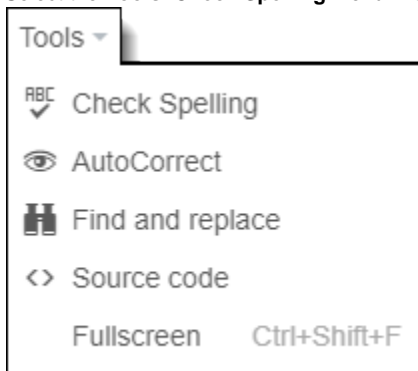
7. Make sure that the **NETWORK SERVICE** user is selected in the **Group or user names** list of the folder **Permissions** window, and select the check box for **Write** permission in the **Permissions** list near the bottom of the window. Click **OK**. Click **OK** again.



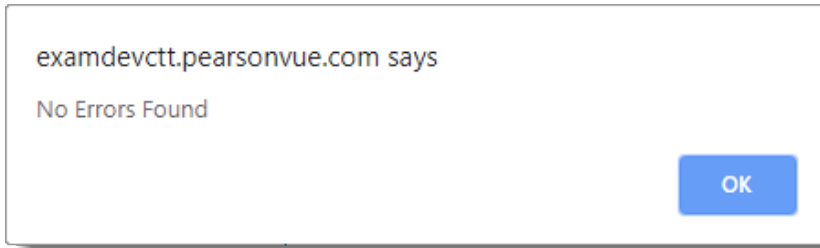
Check if JSpell and the custom dictionary works

Finally, you need to check if the JSpell spell checker as well as the custom dictionary are working as expected. The steps are detailed over here.

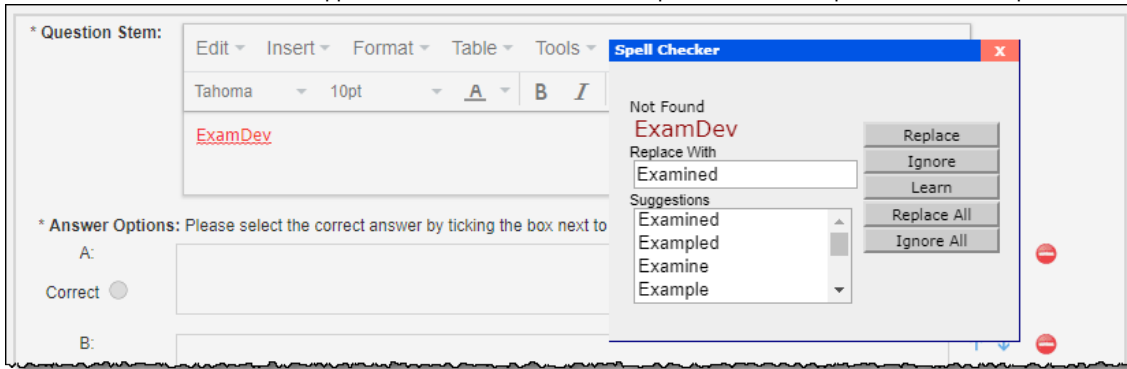
1. Log into ExamDeveloper as a Project Manager and navigate to **Manage Settings Dictionary**.
2. Add non-dictionary words in the custom dictionary as detailed in [Set up a Dictionary for your Project](#).
3. Navigate to **Develop Questions Write Item Write Question** and enter one of the saved non-dictionary words from **step 2** in a Rich Text editor window such as the Question Stem.
4. Select the **Tools Check Spelling** menu in the Rich Text editor toolbar.



5. If JSpell works as expected with the custom dictionary, then you will get a pop-up message stating "No Errors Found" as shown below.



- When a non-dictionary word, not present in the custom dictionary, is entered in any Rich Text editor and the spell checker is run, then the font color of the concerned word appears red and it is underlined. A Spell Checker box opens with various options as shown below.



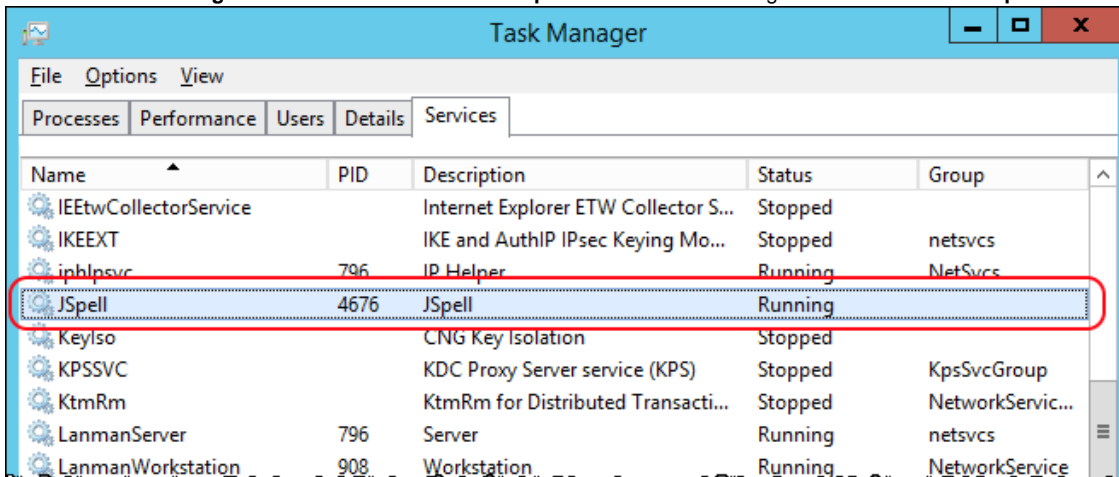
Switching the spell checker dictionary (if required)

You can opt to switch the spell checker later if required as detailed here.

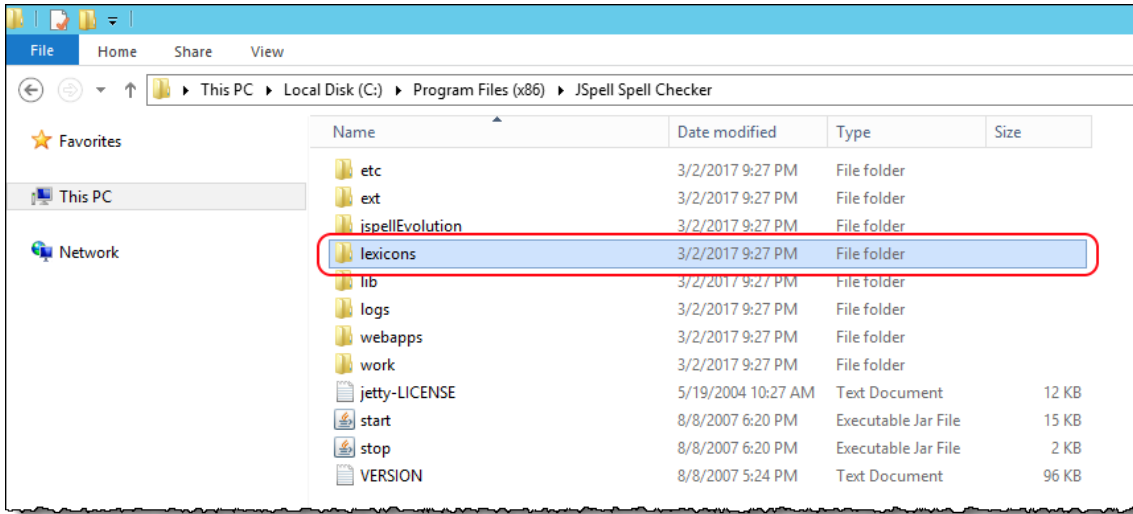
i Acquiring a different dictionary

A US English dictionary is included as standard with the spell checker. Please request Pearson VUE Tech Support for a different customized dictionary of your domain.

- Stop the **JSpell** service using the Services Control Panel. This can be done from the **Services** panel. Open the **Services** panel or open **Windows Task Manager's Services** tab. Locate the **JSpell** service in the list. Right-click it and select **Stop**.



- Locate the JSpell installation folder. This is typically in the **Program Files** folder. For example on a 64-bit server the default location would be `C:\Program Files (x86)\JSpell Spell Checker`.
- Look for a folder named **lexicons** in the Jspell installation folder mentioned in the previous step. It contains a file called **lex_enUS.jdx**. This file should be replaced by the dictionary file you need. For instance, to install the Stedmans dictionary, copy the file `lex_enUS.jdx` to the `lexicons` folder.



4. Start the **JSpell** service. This can be done in the same way as it was stopped in **step 1**, except that you need to select **Start** after right-clicking JSpell in the list. You can confirm that the update was successful by misspelling a word from the new dictionary and checking for suggested corrections.

